

QD1

SMARTGLASSES PRODUCT MANUAL

**The Singularity Nears  
the Smart Glasses  
Product brochure**



## AR+AI revolutionizes supply chain operations

### Shorten the novice training cycle

Through simple interaction, large screen prompts, voice prompts, help the novice quickly familiarize with the operation

### Quick search, quick pick, improve human efficiency

Find goods quickly through the road map and voice prompts, free hands to pick fast

### Double check packing is not limited by venue

Increase the capacity of single warehouse and reduce the **upgrade opportunities** of new warehouses and

### temporary warehouses requiring intelligent equipment

Intelligent operation platform, can be linked with other intelligent equipment, automation equipment



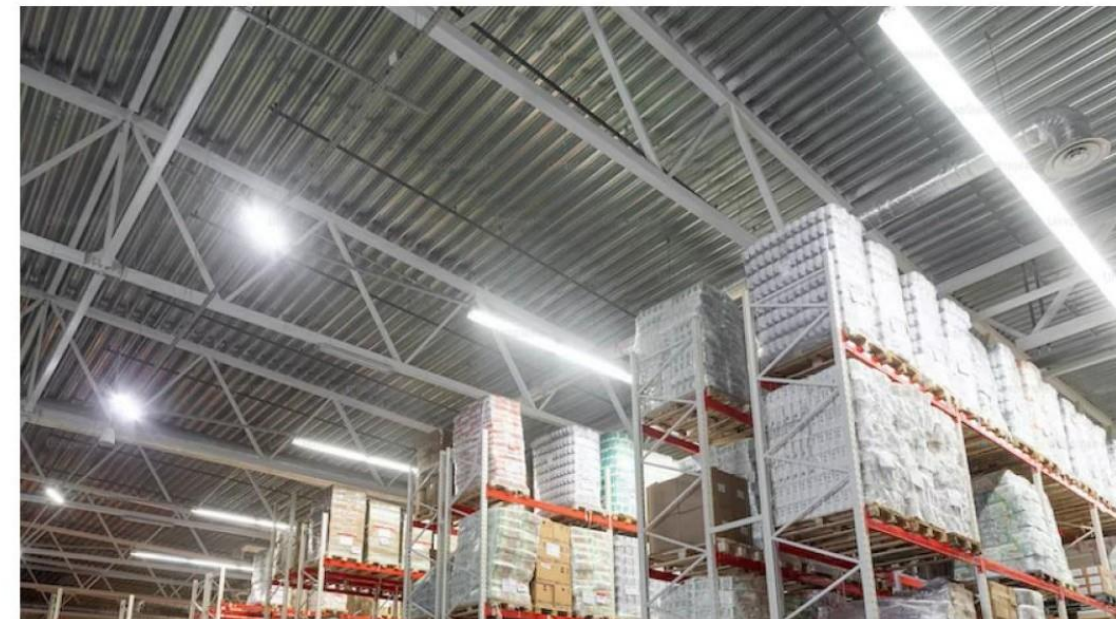




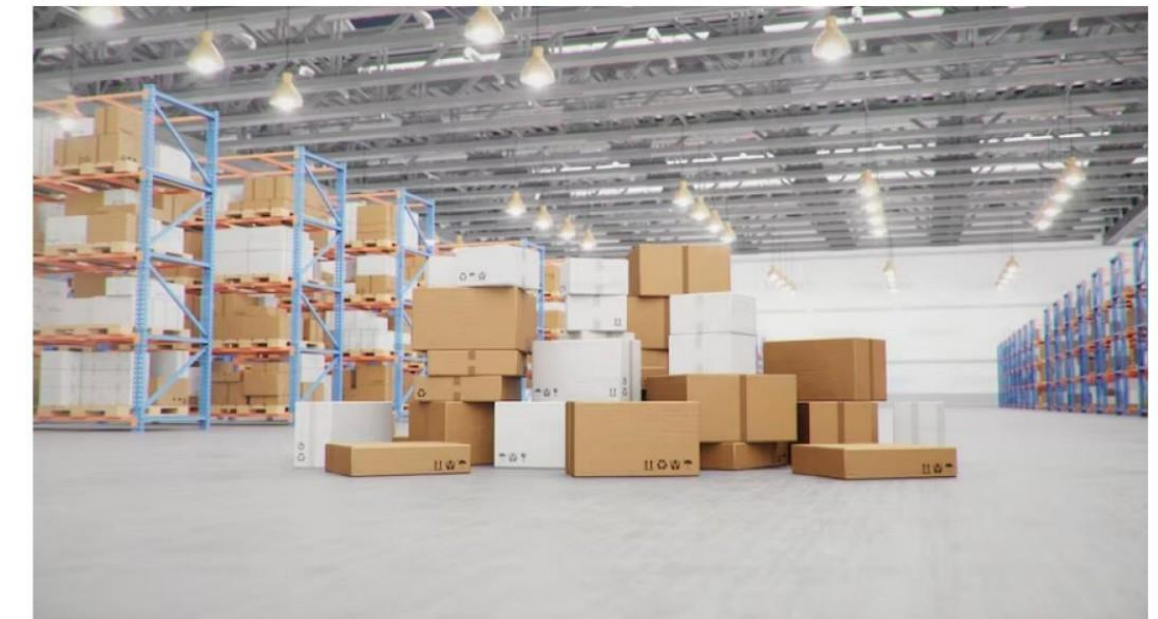
Singularity Near smart glasses are the next generation of intelligent tools with built-in computing power and support binocular full-color AR display.



Through AR display, voice interaction, intelligent recognition and other functions, to achieve the liberation of hands, improve the efficiency of storage production links



Suitable for multi-SKU, high degree of commodity similarity and all kinds of difficult to find goods scene



It is suitable for the scene where moving goods is inconvenient and large and medium-sized goods or several small goods need to be transported

# QD1 Smart Glasses



Portable giant screen  
Binocular full color HD display

85-inch HD E-screen (4-meter line-of-sight equivalent display)  
Light transmittance >95%, the external environment is not blocked, clearly visible screen brightness up to 2500nit, under the sun, the information is still clear and eye-catching

Safe to use, healthy and comfortable

Integrated computing unit  
Multi-mode communication, two-way communication



Integrated computing, storage, camera and other units of the all-in-one design, can work independently

Equipped with 4nm flagship wearable processor, low power consumption and long battery life  
Support multi-mode communication such as BT, Wi-Fi, DP projection screen



HD record  
intelligent recognition

First-person perspective, WYSIWYG, recording critical information in real time

Active non-sensory recognition, supporting items, bar codes, text, license plates and other categories of targets support local storage and real-time cloud storage, to achieve remote coordination and efficient scheduling



Ergonomic design  
comfortable to wear

The mirror leg supports a maximum external opening of 10° to adapt to different head girth

Skin friendly material, soft touch, comfortable to wear binocular display, in line with eye habits

Weight <80g, suitable for long-term wear



Voice Emulation  
Efficient and accurate

Voice control and broadcast, touch, button and other interaction methods, to meet the efficient and accurate interaction in different scenarios



The multi-industry solution is suitable for E

Open source Software architecture  
Standard application apis

Adapt to two-way audio and video communication of different industry solutions, and handle problems "side by side" between backstage and field personnel







| Product specification |                                 |  |
|-----------------------|---------------------------------|--|
| Form                  | Product form                    | all-in-one machine   |
|                       | Color                           | Dark color   |
|                       | Weight                          | 80+2g  |
| Display               | effect                          | binocular full color   |
|                       | Optical scheme                  | LCOS+ binocular array optical waveguide                                  |
|                       | Transmittance is                | 0.95   |
|                       | Screen size                     | 85 "(4 m equivalent)   |
|                       | Resolution                      | 720P@30fps   |
|                       | Angular resolution ( resolution | 49PPD  |
|                       | Brightness                      | goes up to 2500nit   |
|                       | FOV                             | 32°  |
|                       | Interaction                     | main mode  |
|                       | Auxiliary mode                  | touch  |
|                       | Physical key                    | Power button   |
|                       | Performance                     | SoC  |
|                       | RAM                             | 2GB  |
|                       | ROM                             | 32GB   |
|                       | Multimedia                      | camera   |
|                       | Video                           | 1080P@30fps  |
|                       | SPK                             | Anti-leak tone Dual SPK  |
| Mic                   | Noise reduction Dual Mic        |  |
| Data connection       | Wi-Fi bands 2.4GHz and 5GHz     |  |
|                       | Wi-Fi protocol                  | 80211a/b/g/n/ac  |
|                       | Bluetooth                       | Standard Bluetooth 5.1   |
|                       | Bluetooth communication mode    | BR/EDR/BLE   |
|                       | Video signal                    | DP   |
|                       | UsB                             | 2.0  |
|                       | power                           | battery  |
|                       | Charge                          | 10w  |
|                       | Sensor                          | acceleration + gyroscope + geomagnetic + ambient light + proximity light |