

8-port Fast unmanaged Industrial Ethernet Switch

★ Features

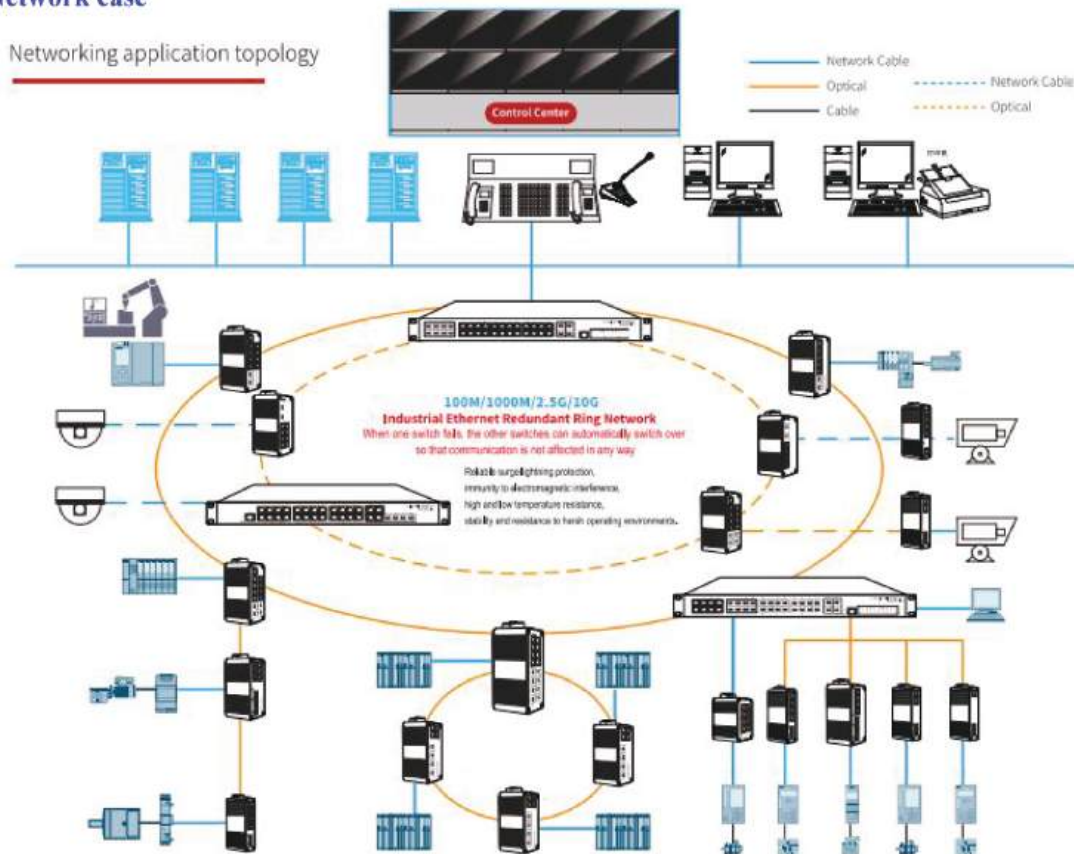


- ★ The products are compatible with mainstream industrial automation protocols, not limited to Modbus TCP, Ethernet/IP, Profinet RT, EthernetCat, etc.
- ★ Using high-performance chips and the latest industrial design
- ★ Reliable anti-surge, anti-lightning, anti-electromagnetic interference, anti-vibration, stable and resistant to harsh working environments.
- ★ Supports redundant DC 9-52V wide voltage and reverse connection protection.
- ★ The wide temperature design is resistant to long-term operation at a temperature from -40°C to 75°C
- ★ Long service life
- ★ Din-rail installation (in the control cabinet or directly on the automation equipment).
- ★ Fan-less design efficient wavy aluminum housing cooling surface, IP40 protection level.

★ Product Introduction

NEU-IB8F is a converging integrated industrial Ethernet unmanaged switch independently developed by our company. This product is mainly developed for the application of point-to-point networks, star networks, tree networks and chain networks in the industrial field. It supports 8-port 10/100Base-TX. This product has a high-performance switching engine, a wavy aluminum alloy shell with an IP40 protection level, a fanless design and an efficient heat dissipation surface, and over-current, over-voltage and EMC protection for the loading power input port. The RJ45 port is equipped with excellent EMC protection performance, so that the series of products can adapt to harsh and dangerous industrial environments. Therefore, it can provide reliable and convenient solutions for users' Ethernet equipment networking.

★ Network case

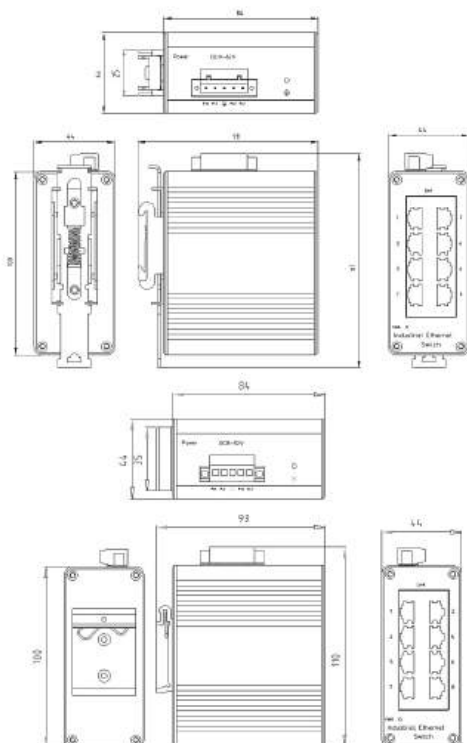


★ Specifications

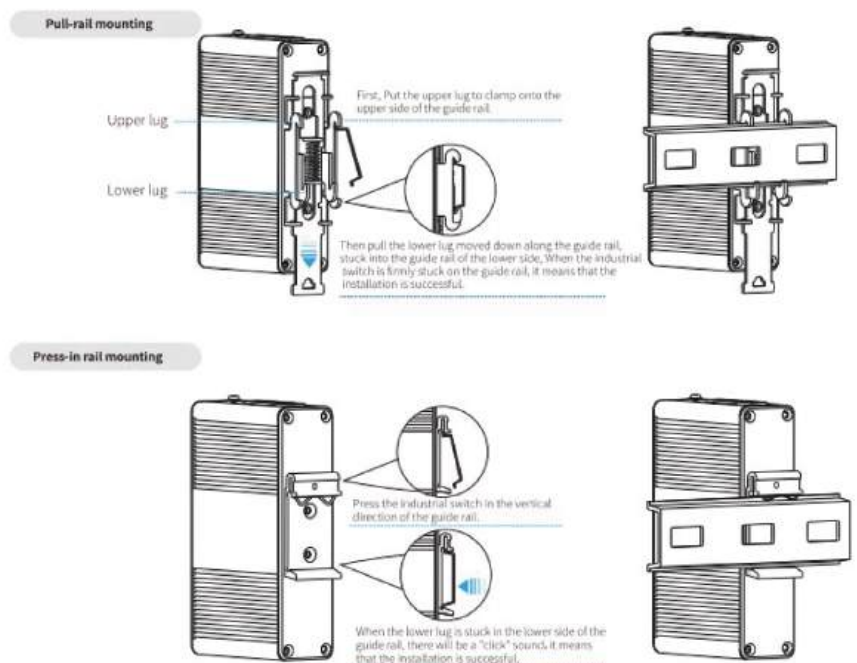
Product Introduction	
Model No.	NEU-IB8F
Product description	8-port Fast unmanaged Industrial Ethernet Switch
Port Description	8-port RJ45 connector
Ethernet interface	
RJ45 Ports	10/100BaseT(X), Automatic detection, Full/half duplex MDI/MDI-x adaptive
Standards	
Network Protocols	IEEE802.3 10BASE-T; 100BASE-T IEEE802.3i 10Base-T; IEEE802.3u; IEEE802.3x;
Twisted Pair	10BASE-T: Cat3,4,5 UTP (≤100 meter) 100BASE-TX: Cat5 or later UTP (≤100 meter)
Switch Properties	
Processing Type:	Store and Forward
MAC Table Size	2K
Packet Buffer Size	1Mbit
Bandwidth	1G
Switching Delay	<10μs
Power Consume	<3Watts
Power Parameters	
Power	Connection: 1 removable 5-contact terminal block(s) Input voltage: DC9 to 52V redundant dual inputs support reverse connection protection
LED Indicator	Power: Green Link: Green
Physical Characteristics	
Enclosure	Wavy aluminum alloy
Protection level	IP40
Dimensions	100x84x44mm (length x width x height)
Weigh	0.4kg
Installation	Push-in DIN rail
Environmental Limits	
Operating Temperature	-40~75°C (-40~185 °F)
Storage Temperature	-40 to 85°C (-40 to 185°F)
Ambient Relative Humidity	5 to 95% (non-condensing)

Standards and Certifications	
Safety	EN 62368-1(LVD)
EMI	FCC Part 15 Subpart B Class A, EN 55022 Class A
EMS	IEC(EN)61000-4-2(ESD): $\pm 8\text{kV}$ Contact, $\pm 8\text{kV}$ indirect, $\pm 15\text{kV}$ Air discharge IEC(EN)61000-4-3(RS): 10V/m ($80\sim 1000\text{MHz}$) IEC(EN)61000-4-4(EFT): power line: $\pm 4\text{kV}$; data line: $\pm 2\text{kV}$ IEC(EN)61000-4-5(Surge): power: $\pm 4\text{kV}$ CM/ $\pm 2\text{kV}$ DM; data: $\pm 6\text{kV}$ CM/ $\pm 4\text{kV}$ DM IEC(EN)61000-4-6(RF conduction): 3V ($10\text{kHz}\sim 150\text{kHz}$), 10V ($150\text{kHz}\sim 80\text{MHz}$) IEC(EN)61000-4-16(Common mode conduction): 30V cont. 300V , 1s IEC(EN)61000-4-8
Shock	IEC 60068-2-27
Freefall	IEC 60068-2-32
Vibration	IEC 60068-2-6
MTBF	
Time	300 000hrs
Warranty	
Warranty Period	5 years
Package Contents	
Device	1 x NEU1080F switch
Documentation	1 x quick installation guide 1 x warranty card

★ Installation Size



★ Installation method



Model	Features
NEU-IB8F	8-ports RJ45 Fast unmanaged Industrial Ethernet Switch, 35mm DIN rail design, DC9~52V power supply, Wide temperature: -40°C-75°C.AC to DC power adapter is not included.

★ Model Information

★ Optional Power

Interface	Model	Features
Quasi-industrial grade 12W power adapter	PDC12V1BI	12W desktop power adapter, desktop 100-240V input AC to DC 12V1A, DC interface.
Quasi-industrial grade 24W power adapter	PDC24V1BI	24W desktop power adapter, desktop 100-240V input AC to DC 24V1A, DC interface.
Industrial grade 24W DIN rail power adapter	PDD24V1AI	Industrial 24W DIN rail power adapter, DIN rail 100-240V input AC to DC 24V1A, AC/DC industrial terminal interface.